

We like sharing our bed. At Somnium we are obsessed with good sleep and with sharing that experience. Of all the things you can do on a mattress, we believe sleep is by far the most exciting.

You already know what a great night's sleep can do for you and your life. After all, a mattress is not just a mattress but a facilitator of health and your source of vigor for the day. Somnium delivers both in sleek, high style – with the most advanced mattress available today. Our patented springs, European design, and ergonomic technology made in the United States are what set us apart.

We have more than mastered the mattress. We have created the optimal sleep experience.

[Our Mattress 3](#) / [The Benefits 8](#) / [Good to Know 17](#) / [About Us 21](#)



What's going on in our bed...

Everything we could change for the better about a mattress we did. Cleaner, lighter, healthier, better support, better for the environment, and more comfortable.

We aren't just another spring mattress or a foam mattress; we are a mattress of innovations.

The Springs

Republicans are three times more likely to get more than six hours of sleep at night than Democrats. *Sleep Fact*

Our springs are big on spooning. They are the only ones available in two firmness grades to cradle every contour of your body while you dream: Softer springs allow the shoulder and pelvis to sink into the mattress while firmer ones actively support the lumbar spine. It's a fine-tuned task metal coils just aren't up to. Ours are.

Made from the highest grade TPEE (or Thermoplastic Polyether-Ester Elastomer, for long), a material used in the aviation and automotive industries and high-performance athletic gear, they were designed to exceed your expectations of support and flexibility. You get the strength of a ski boot with the bounce and comfort of a sports shoe. The result is support that is literally the most flexible in the industry: Structural strength superior to metal's in a sleek hourglass shape with sheer limitless 3D flexibility.

And the cherry on top: Our spring's design also eliminates motion transfer. Eat your heart out, metal!





The Cover

We are clean freaks in the bedroom. That's why we designed a mattress with a smooth, tufting-free surface to ensure that there are neither nooks nor crannies for dirt and dust bunnies to hide in.

And because we want to keep things neat, our durable rayon-blend covers are removable and can be washed as often as you want to -- and as hot as any trace of last weekend's breakfast in bed might require. Being able to keep your bed pristine is genius; making the job easy with a cover that zips into two pieces you can machine wash at home ensures you may actually give it a try.

And while cleanliness might be next to Godliness, we are also keen on comfort and health. That's why our cover features a strip of airy mesh running the perimeter to help with ventilation and the fabric is free of toxins, dyestuff, flame retardant or harmful chemicals.

The Foam

Foams can be a scary proposition. Many bring chemicals into your home, off-gas, smell of glue, or are bad for the environment. Our top-of-the-line foam is toxin-free, safe cold foam that is made using water vapors and air pressure instead of smelly injection gases.

Plus, being earth-friendly and benign by design demanded that we incorporate the renewable resource soy into our foam and only use solvent-free adhesives to assemble it. So we did.

8 hours? Not for them! Giraffes can go without sleep for weeks, while brown bats sleep for nearly the entire day.

Sleep Fact

The result is excellent news for your bedroom: Our highly resilient foam naturally never off-gases and it is pre-compressed to create a breathable open-pore structure. This structure helps overheated sleepers by allowing better airflow for a cooler sleep environment. It also prevents dips and it offers extra elasticity and density, allowing us to encase our sleek 8-inch bed in only a slender 2-inch layer of foam without forgoing comfort.

The Box



Sweet dreams are based on this: A supportive foundation with an even surface for your mattress to plainly rest on.

That's the simple concept behind our Somnium box. At first glance a look-alike to traditional box springs, the design is actually quite different from its conventional predecessor: Metal-free just like our mattress, the sleek yet sturdy base is topped with solid wood slats that are spaced an air gap apart and upholstered in our airy mesh to promote proper ventilation.

And grand as the Somnium box is, our mattresses aren't stuck on it: They will also pair well with any other even, supportive surface, whether it is a firm slatted frame with gaps of 2" or less, our Somnium base, a platform or - in a pinch - your living room floor.

Since all the support technology you need is built right into the mattress, all you have to add for comfort is a surface for it to rest on - plain and simple.



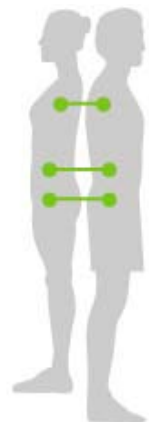
The Base: We want to support you. Even if you are the type to think outside the box who owns a bed frame designed for slatted European support systems rather than traditional box springs.

For you we designed the Somnium base. Made from durable high-end Euro ply and sustainable American hardwood, our lightweight bases step up the game of maximum support with a simple, effective and minimalist design that allows it to replace most slat systems in imported and US-built low profile bed frames. Our air-permeable base (check out those vent holes!) is the perfect solution to turn your existing bed frame into the support of your dreams. You are welcome!

Our mattress is all about the benefits. It's a mattress that offers so much more than just a place to sleep.

Comfort Zones

You don't know how good firm feels until you've slept on a Somnium mattress. Our beds are zoned for your comfort.



Whether you are a 6ft or 5ft 6, the distance from your shoulder to your hip remains the same

Somnium is the only mattress that truly reconciles human anatomy and human ergonomics, and we do it by using different firmness grades of springs in different parts of the bed: Softer ones allow the shoulder and pelvis to sink more deeply into the mattress while firmer ones actively support the lumbar spine. This novel approach of using two different firmness grades of springs in each bed is so logical we are surprised nobody ever thought of it before.

And whether you prefer to sleep on a firm or regular Somnium, our design suits all body types and the comfort zones always line up - regardless of your height, shape, or size. Better yet: Each bed's unique symmetrical design allows for it to be flipped or turned upside down and still delivers the correct support and comfort.

So go ahead. Step out of your comfort zone and let Somnium do its job.



Air Circulation

We are proud to be one of the coolest mattresses around. Though in our case being cool doesn't even take much effort, since it's all in the design. And it's all about the air. Every part of our mattress has been designed to create a well-vented and temperature-controlled environment. Because sleeping at the right temperature equals better comfort.



Luckily our springs give us a big leg up in the quest to make our mattress as air-permeable as possible: Because we use only 80 to 110 springs in each mattress rather than hundreds and don't need additional filling materials for comfort, the inside of our mattresses is as uncluttered as the beds' sleek outside indicates. Air can circulate freely inside the core.

Next up, that airy core is encased in only two inches of our open-pore structure foam virtually guaranteeing a high level of air permeability and natural moisture regulation.

The final coolness factor is our zippered cover, made out of breathable fabric and sporting a strip of airy mesh running the perimeter. How cool is that?

No Motion Transfer



Our springs only have moves for you. And that's assuring to know when sleeping next to a restless partner.

On a Somnium bed you will never feel any motion transfer. The design of our springs is the antidote to this unkindest of all chain reactions. Connected with each other at the center - rather than the top and bottom in the manner traditional coils have done for centuries - each of our springs moves individually allowing you to move without disturbing your partner.

Better yet: By design, our springs' surface expands when you lie on it, closing any gap to its neighbor. This creates a continuous sleep surface that moves with your body but is unnoticeable to the person sleeping next to you.

Sleep is the strongest biological urge we have - stronger than sex or the desire to eat. *Sleep Fact*



Chemical-Free & Hypo-allergenic

We practice safe sleep. Somnium mattresses provide a safe nighttime haven for people with allergies and chemical sensitivities. But carefully sourced, hypoallergenic components only set our baseline.

We shun common trigger materials like latex or wool in our beds and insist on Ökotex-certified fibers in our covers to assure they are free of formaldehyde, heavy metals, dyes or other harmful chemicals. And we picked inherently flame resistant materials like rayon and highly resilient open core foam instead of flammable cotton, traditional bedding foam, or combustible latex. Our fire solution is as simple as it is savvy: Since it offers fire safety on a molecular level, it will never wear off, rub off, wash off or make you sneeze.

Our fiercest weapon in the fight against allergies, however, is Somnium's smart design. Washable covers and good air circulation create a sleep environment that is inhospitable to dust mites. Since these microscopic evildoers and their droppings cause countless allergies, keeping their numbers down was one of our declared goals.

Glad to report we are winning: Somnium 1; dust mites: 0.

Lightweight



Women spend more time sleeping than men- and men more time eating than women. *Sleep Fact*

Lightweight technologies improve our lives everywhere - from the graphite tennis racquet and the titanium bike to carbon fiber car parts and now the Somnium elastomer spring mattress. Just like those other amazing lightweight innovations, we have improved upon the heavy original and created the products' best version yet. Eliminating the heavy metal coils and unnecessary bulk allowed us to build a sleek 8-inch profile mattress with outstanding support at a fraction of its predecessor's weight.

Why make life harder than it needs to be? Finally you can tuck sheets without strain and flip your mattress with ease.

Recyclable



Every component of a Somnium mattress can be recycled or repurposed once you are ready to part with it again. That's how we see to it that saving the world in your sleep is possible after all.

Used mattresses are a huge problem in landfills because they are hard to break down and sheer impossible to dismantle. Somnium begs to differ. Our covers simply zip off so the fibers can be recycled and the soy-blend foam can easily be stripped away to be turned into yoga mats, insulation or carpet underlay.

Even our high-tech springs enjoy a useful afterlife: Once ground up, their high-quality elastomer is reborn as a kid's toy.

Considering the entire life cycle of a product is the new shade of green. That's why we produce quality that lasts, source locally and work diligently to minimize our impact on the environment.

Good sleep is dear to us: 27 percent of Americans are willing to give up chocolate for a solid eight hours every night, 22 percent would ditch their cell phone, and 2 percent even their spouse.

Luckily you don't have to make any of these sacrifices.

Though there are a few things you might want to know in your sleep:

The Myth of Tossing & Turning

'Stop tossing and turning' has been the mantra of the bedding industry for decades as mattress makers equated movement at night with restless sleep and discomfort and promoted thick, overstuffed mattresses as their solution.

Not so fast. It's perfectly natural for us to move five to ten times every hour even in our sleep - and putting a stop to it hurts more than it helps. Movement allows our body to rejuvenate. It is what keeps your muscles supple and what helps the disks in your spine to return to their healthy plump shape. It's the reason you are taller again when you wake up in the morning than you were with a tired, compressed spine the night before. And the reason you never feel good getting out of a tight airplane seat after a cross-country trip.

The perfect wedding gift? Two mattresses. 25% of US couples sleep in separate beds or bedrooms. *Sleep Fact*

Sleeping on a soft, cushy mattress makes it difficult to move freely while you sleep. Much as your body will try, it can't win the exhausting fight against the bed. Gaining that restraint it will lose the chance to naturally restore itself.

Somnium was designed to support your nightly movement. We are a completely new kind of mattress: Firm, liberating and comfortable as well. So you get the best of all worlds.

The Mattress of Athletes

Somnium is the mattress for athletes and active individuals - it's their fitness equipment for the night. Dare we say anyone who wants to improve performance should be sleeping on one? It keeps you perfectly aligned, gives you freedom to move and offers the most comfortable sleep environment.

Studies have shown that getting the most restorative sleep possible allows athletes to exhibit superior performance and set new personal records. The quality of your sleep is directly related to your physical performance. So give your body the proper amount of sleep and the right mattress to do it on. Our mattress is your tool to get in your best personal shape. It gives you a fully energized and strengthened body to perform at your peak ability.

Run faster, jump higher, serve harder. All you have to do is sleep.

Electro Smog

Not everything with the potential to disturb your dreams is visible to the naked eye. And just like an invisible bad dream, electromagnetic fields can disrupt your nightly rest. That's one of the reasons we are excited our spring design allowed us to finally built a metal-free bed. Since metal coils have long been suspected of amplifying EMFs and preventing sleepers from reaching the most restorative state, we are glad to be one step ahead with our product.

Allergic to Dirt

Unfortunately it is true: The average person loses one pint of moisture a night - a cumulative eight Jacuzzi tub-size containers over the course of ten years.

Worse yet, our misfortune is good news for dust mites who feed on sweat and old skin and find an ample supply in most beds. And that not only makes you sick to your stomach: The microscopic evildoers and their droppings can also trigger numerous allergies.

Somnium has put a stop to that vicious, dirty circle and is bringing hygiene back to bed: Starting with foam that is inhospitable to mites (and bed bugs, by the way!) we have designed a mattress that allows natural air circulation to help moisture evaporate immediately.

We also designed a smooth sleep surface without wrinkles, buttons, or tufting that could serve as breeding ground for dust mites and other pests. Plus our removable covers zip right off and can be washed in hot water and return sparkling clean.

About Us



Two pairs of feet are often better than one. In the same way that taking a good concept all the way around the globe and crossing it with another sometimes yields a better product than the original. Case in point: Our mattress and our company.

‘When I first moved to the US, I really missed my old bed,’ admits Austrian native Rainer Wieland. The former gymnast found his first American mattress lacking in the support he had enjoyed at home; support that had kept old sports injuries at bay for years. After briefly flirting with the idea to remedy the

situation for himself and 300 million Americans by importing beds from Europe, a better plan won out: Take the best of both worlds - American innersprings and high-tech European materials and design - and create something new and even better.

Joining forces with German marketing maven Susanne Flother, a former swimmer whose sleep troubles and sports injuries had mirrored Rainer’s for years, the two friends developed the first Somnium mattress in 2006, a production in California and national distribution soon followed. ‘And even though we haven’t converted all of America yet, we are working on it’, promises Susanne.

